

# SOUTH EAST ASIA RIVER CRUISE & TOUR

EXCLUSIVE FULL SHIP CHARTER  
MARCH 12 - APRIL 1, 2025



**Join Rod & Deb from Greenland Garden Centre on a Southeast Asia River Cruise & Tour.** On this inspiring river cruise & tour through Vietnam, Cambodia, & Thailand, you'll be immersed in the cultures and ancient traditions as you sightsee and spend time with locals in the most fascinating places along the mighty Mekong River.

## Newwest Travel - Greenland Garden River Cruise Includes:

- ❖ 19-day tour & river cruise with sightseeing, outings, and excursions with local guides
- ❖ International airfare credit of up to \$2000 per person
- ❖ 2-pre nights in Hanoi; 1-pre night in Ha Long Bay; 3-pre nights in Ho Chi Minh City
- ❖ 7-nights' accommodation onboard the award-winning [Avalon Saigon](#) river cruise ship.  
***This is an exclusive full ship charter with Greenland Garden Centre!***
- ❖ 2-post nights in Siem Reap and 3-post nights Bangkok
- ❖ Meals included onboard the ship: Daily full buffet breakfast; Daily lunch buffet; Daily four-course a la carte dinner in the main Dining Room (Complimentary sparkling wine with breakfast; wine, beer, or soft drinks with every lunch and dinner)
- ❖ Intra-country flights in Asia
- ❖ Pre-paid gratuities for the ship crew and cruise director onboard the ship. *(Any service off the ship; tips are not included)*
- ❖ Escorted by Rod & Deb from Greenland Garden Centre
- ❖ Bon Voyage reception at Greenland Garden Centre in Edmonton prior to departure

***Pre & post stays can be quoted at time of booking.***



**Exclusive Promotion: Reserve your Southeast Asia River Cruise by July 31<sup>st</sup> to save \$1300 per person off the listed rates!** *(Applicable to double occupancy only)*

## Southeast Asia River Cruise Package

### Single Occupancy

Category B Panorama Suite \$23,750  
Category A Panorama Suite \$25,375

### Double Occupancy

Category B Panorama Suite \$16,250  
Category A Panorama Suite \$17,450

*Prices are per person based on room occupancy; all taxes included.*

*Tour prices are subject to change without notice. Prices are per person based on room occupancy and are non-refundable. [Travel Visas are required for Vietnam & Cambodia. Click here for full details.](#) Seat upgrades on the airline may be available. This tour includes moderate physical activity. The itinerary blends some longer days and shorter days with more leisure time. Walking tours, as well as walking slightly longer distances, up-stairs or on uneven walking surfaces should be expected. Tour itinerary is subject to change. Past Globus Family of Brands travelers may qualify for an additional Welcome Back Credit, contact Newwest Travel for more information. [Read more about Newwest Travel's Terms & Conditions and Travel Disclaimers.](#)*

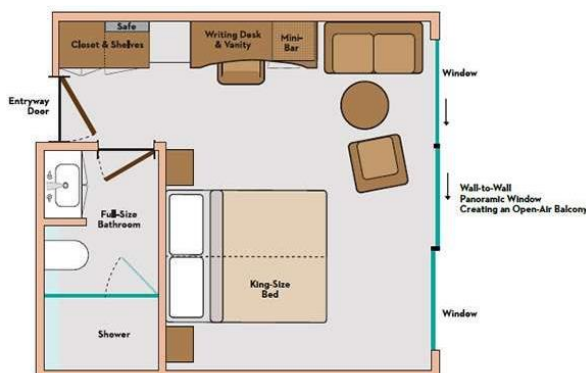


**FOR MORE INFO AND RESERVATIONS PLEASE CONTACT NEWWEST**  
1 (800) 661-7281 | (780) 432-7446 | [info@newwesttravel.com](mailto:info@newwesttravel.com) | [newwesttravel.com](http://newwesttravel.com)

## Avalon Ship Features:

- Air-conditioned Panorama Lounge
- Complimentary specialty coffees including espresso and cappuccino available throughout the day
- Daily cocktail hour with cocktail of the day
- Complimentary water stations
- Open-air observation lounge with shade system & premium lounge chairs
- Bar serving premium spirits, wine & complimentary coffee, tea, soft drinks, and local beer/spirits throughout the day
- Complimentary Wi-Fi access in the lounges (where signal is available)
- Spa treatment room
- Non-smoking staterooms & ship interior
- Fitness Room
- Library and games
- English-speaking friendly crew, staff & professional Cruise Director
- Seasonal recipes featuring the freshest local ingredients
- Sightseeing with Expert Local Guides
- Vegetarian options available with all meals
- Onboard lectures, activities & entertainment
- Complimentary coffee, tea, soft drinks, local beer/spirits with all onboard meals
- Daily early-riser coffee & tea
- Daily a la carte breakfast
- Complimentary juices with breakfast
- Four-course à la carte dinners with choice of salads, soups, entrées, dessert or cheese
- Daily a la carte lunch including regional specialties, healthy Avalon Fresh options and classic dishes
- Complimentary wine with all onboard lunches & dinners
- Chef-prepared onboard meals with regional cuisine and familiar favorites
- Headsets for all guided shore excursions
- Behind-the-scenes galley tour
- Choice of Classic, Active or Discovery excursions so that you can experience your cruise your way
- Flatscreen satellite TV with English-speaking channels & over 100 free movie options
- Onboard assistance is available to recommend, reserve and further personalize your cruise

## Avalon Suite (Category A & B)



- Comfort Collection Beds
- Egyptian super-combed cotton linens
- Soft & firm pillows
- Choice of bed configuration
- Nightly turn-down service
- Bedside tables with reading lamps
- 14' Wall-to-Wall Panoramic window measuring that opens to create a large Open-Air Balcony
- Large private bathroom featuring full shower with glass door, hairdryer, and premium L'Occitane bath amenities
- Spacious closets with shelves for ample storage
- Easy under-bed luggage storage
- Alarm clock
- Writing desk/vanity with mirror & comfortable chair
- In-house telephone
- Bathrobes & slippers
- Complimentary filtered water
- In-room safe
- Individual climate control
- One King-Sized Bed or Two Twins
- USB Ports

## Avalon Saigon Suite Ship

Since first taking her maiden voyage on the Mekong River, the Avalon Saigon has been praised for delivering an intimate cruise experience as part of Avalon's award-winning fleet of Suite Ships. Saigon sails with a maximum of just 36 guests, delivering all the modern features you expect from Avalon Waterways, while incorporating the unique character and charm of Southeast Asia. The Avalon Saigon is designed to venture easily into areas where other cruise ships cannot, while measuring as wide and long as ships carrying twice the number of our just 36 guests.

Cruising uninterrupted from Ho Chi Minh City to Phnom Penh (or vice versa), the Saigon eliminates hours of motorcoach travel time associated with other river cruise ship itineraries. The Avalon Saigon Suite Ship incorporates the classic colonial charm befitting the Vietnam and Cambodia experience with the modern features you expect from Avalon. Each Panorama Suite features 245-square-feet of living space with wall-to-wall, floor-to-ceiling panoramic windows to create river cruising's only Open-Air Balcony. With luxurious beds that face the window, you'll never miss a fascinating view of the Mekong.