

THE NETHERLANDS IN BLOOM



Join Rod & Deb from Greenland Garden Centre on a Spring River Cruise!

If you're dreaming of flowers waving and windmills whirling, cobblestones and canals, and delicious Dutch treats, this Avalon cruise through the Netherlands brings it all to life. Garden enthusiasts will delight in a visit to see the breathtaking colors of Keukenhof, also known as the "Garden of Europe". Sail while Holland is blooming during tulip season to see beauty and breathtaking natural splendor.

April 4th - 16th, 2026



Newwest Travel - Netherlands in Bloom River Cruise Includes:

- ❖ Round-trip international airfare from Edmonton to Europe with KLM
- ❖ 12-day river cruise & tour with sightseeing, outings, and excursions with local guides
- ❖ 2-pre cruise nights in Amsterdam with breakfast
- ❖ 9-nights' onboard the award-winning [Avalon Panorama](#) river cruise ship (April 7th - 16th)
- ❖ **Meals included onboard the ship:** Daily full buffet breakfast; Daily lunch buffet; Daily a la carte dinner in the main Dining Room (*Complimentary sparkling wine with breakfast; wine, beer, or soft drinks with every lunch and dinner.*)
- ❖ Pre-paid gratuities for the ship crew and cruise director onboard the ship. (*Any service off the ship; tips are not included.*)
- ❖ Private airport transfers in Amsterdam for arrival & departure
- ❖ Escorted by Rod & Deb from Greenland Garden Centre
- ❖ Complimentary parking at JetSet Valet at Edmonton International Airport
- ❖ Bon Voyage reception with the group in Edmonton at Branches Restaurant



Exclusive Promotion: Reserve your Netherlands in Bloom River Cruise & Tour by May 31st to save \$2,300 per person off the listed rates!

Netherlands in Bloom River Cruise Package:

Single Occupancy

Category E/D Deluxe Stateroom	\$14,850
Category B Panorama Suite	\$18,835
Category A Panorama Suite	\$18,940
Category P Panorama Suite	\$19,035

Double Occupancy

Category E/D Deluxe Stateroom	\$11,085
Category B Panorama Suite	\$13,660
Category A Panorama Suite	\$13,725
Category P Panorama Suite	\$13,890

Prices are per person based on room occupancy in CAD\$; all taxes included.

Tour prices are subject to change without notice. Prices are per person based on room occupancy and are non-refundable. Seat upgrades on the airline may be available. This tour includes moderate physical activity. The itinerary blends some longer days and shorter days with more leisure time. Walking tours, as well as walking slightly longer distances, up-stairs or on uneven walking surfaces should be expected. Tour itinerary is subject to change. Past Globus Family of Brands travelers may qualify for an additional Welcome Back Credit, contact Newwest Travel for more information. [Read more about Newwest Travel's Terms & Conditions and Travel Disclaimers.](#)



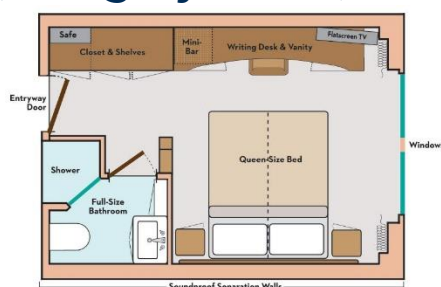
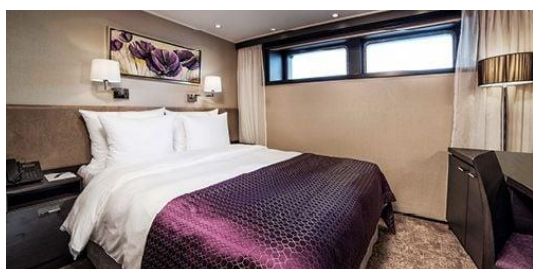
**FOR MORE INFO AND RESERVATIONS PLEASE CONTACT NEWWEST
1 (800) 661-7281 | (780) 432-7446 | info@newwesttravel.com | newwesttravel.com**



Avalon Ship Features:

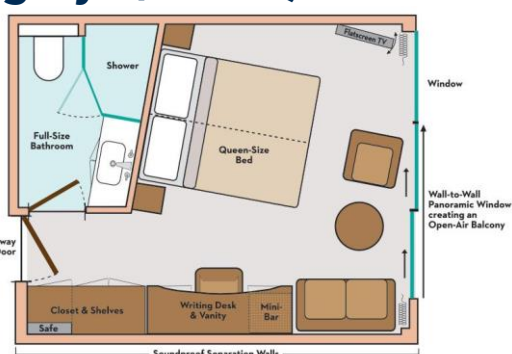
- Air-conditioned Panorama Lounge
- Complimentary specialty coffees including espresso and cappuccino available throughout the day
- Daily cocktail hour with cocktail of the day
- Complimentary water stations
- Open-air observation lounge with shade system & premium lounge chairs
- Bar serving premium spirits, wine & complimentary coffee, tea, soft drinks, and local beer/spirits throughout the day
- Complimentary Starlink Wi-Fi access (where signal is available)
- Spa treatment room
- Non-smoking staterooms & ship interior
- Fitness Room
- Library and games
- English-speaking friendly crew, staff & professional Cruise Director
- Seasonal recipes featuring the freshest local ingredients
- Sightseeing with Expert Local Guides
- Vegetarian options available with all meals
- Onboard lectures, activities & entertainment
- Complimentary coffee, tea, soft drinks, local beer/spirits with all onboard meals
- Daily early-riser coffee & tea
- Daily a la carte breakfast
- Complimentary juices with breakfast
- Four-course à la carte dinners with choice of salads, soups, entrées, dessert or cheese
- Daily a la carte lunch including regional specialties, healthy Avalon Fresh options and classic dishes
- Complimentary wine with all onboard lunches & dinners
- Chef-prepared onboard meals with regional cuisine and familiar favorites
- Headsets for all guided shore excursions
- Behind-the-scenes galley tour
- Choice of Classic, Active or Discovery excursions so that you can experience your cruise your way
- Flatscreen satellite TV with English-speaking channels & over 100 free movie options
- Onboard assistance is available to recommend, reserve and further personalize your cruise

Avalon Deluxe Stateroom (Category D or E)



- Complimentary Wi-Fi
- USB Ports
- Lighted makeup mirror
- One Queen-Sized Bed or Two Twins
- Two windows
- Egyptian super-combed cotton linens
- Comfort Collection Beds
- European-style duvets
- Soft & firm pillows
- Extra blankets
- Hairdryer
- Nightly turn-down service
- Spacious 3-door closets with shelves
- Flatscreen satellite TV with English-speaking channels & over 100 free movie options
- Direct-dial telephone
- Bathrobes & slippers
- Complimentary filtered water
- In-room safe
- Elegant, contemporary design
- Full shower with glass door
- Writing desk and chair
- Luxurious mattress toppers
- Choice of bed configuration
- Bedside tables with reading lamps
- L'Occitane bath products
- Easy under-bed luggage storage
- Alarm clock
- Individual climate control
- Large mirror in bathroom
- Well-stocked minibar

Avalon Panorama Suite (Category B, A or P)



- Complimentary Wi-Fi
- USB Ports
- Lighted makeup mirror
- One Queen-Sized Bed or Two Twins
- Make-up mirror
- 6-person sitting area
- Marble countertops in bathroom
- Wall-to-Wall Panoramic Window with Open-Air Balcony
- Sofa
- Coffee table
- Egyptian super-combed cotton linens
- Comfort Collection Beds
- European-style duvets
- Soft & firm pillows
- Extra blankets
- Hairdryer
- Nightly turn-down service
- Spacious 3-door closets with shelves
- Flatscreen satellite TV with English-speaking channels & over 100 free movie options
- Direct-dial telephone
- Bathrobes & slippers
- Complimentary filtered water
- In-room safe
- Elegant, contemporary design
- Full shower with glass door
- Writing desk and chair
- Luxurious mattress toppers
- Choice of bed configuration
- Bedside tables with reading lamps
- L'Occitane bath products
- Easy under-bed luggage storage
- Alarm clock
- Individual climate control
- Large mirror in bathroom
- Well-stocked mini bar

Avalon Panorama Suite Ship

The Avalon Panorama led the way as the first of its kind in the industry to feature two full decks of Panorama Suites complete with wall-to-wall, floor-to-ceiling panoramic windows. You'll cruise in river cruising's only Open-Air Balcony in a 200-square-foot suite that's 30% larger than the industry standard. Our Comfort Collection beds actually face the view, so you can stretch out and relax with the world at your feet. Retire each evening and wake each morning to a panorama of picture-postcard scenes! Exciting onboard amenities include complimentary computer use in public areas and complimentary Starlink Wi-Fi access, a well-stocked library, a Fitness Center, and a spacious Sky Deck with premium lounge chairs, shade system, whirlpool, and delightful Sky Bistro. There's no better way to take in the view than cruising in Europe in the spacious comfort of the Avalon Panorama.

