

CHRISTMAS MARKET RIVER CRUISE

VIENNA TO PRAGUE



AVALON WATERWAYS

Greenland GARDEN CENTRE

NEWWEST TRAVEL & CRUISES



Join Rod & Deb from Greenland Garden Centre on a festive 11-day

Christmastime River Cruise Sail through Europe's festive cities and Christmas markets.

Explore to your heart's content with a warm cup of *svažené vino* (hot mulled wine) among the rows of brightly decorated wooden huts and be sure to see the beautifully decorated trees on this perfect, seasonal river cruise. The Christmas markets offer an array of Christmas tree ornaments, wooden toys, and local handicrafts. **November 25th - December 6th, 2025**



Newwest Travel - Christmastime European River Cruise Includes:

- ❖ Round-trip international airfare from Edmonton to Europe with KLM
- ❖ 11-day river cruise & tour with sightseeing, outings, and excursions with local guides
- ❖ 2-pre cruise nights in Vienna with breakfast
- ❖ 6-nights' onboard the award-winning [Avalon Envision](#) river cruise ship. (November 28th - December 4th)
- ❖ 2-post cruise nights in Prague with daily breakfast
- ❖ **Meals included onboard the ship:** Daily full buffet breakfast; Daily lunch buffet; Daily a la carte dinner in the main Dining Room (Complimentary sparkling wine with breakfast; wine, beer, or soft drinks with every lunch and dinner)
- ❖ Pre-paid gratuities for the ship crew and cruise director onboard the ship. (Any service off the ship; tips are not included)
- ❖ Private transfers in Vienna & Prague for arrival & departure
- ❖ Escorted by Rod & Deb from Greenland Garden Centre
- ❖ Complimentary parking at JetSet Valet at Edmonton International Airport
- ❖ Bon Voyage reception with the group in Edmonton prior to the tour



Exclusive Promotion: Reserve your Christmastime River Cruise & Tour by January 31st to save \$750 per person off the listed rates!

Christmastime River Cruise Package:

Single Occupancy

Category E/D Deluxe Stateroom	\$12,815
Category B Panorama Suite	\$15,375
Category A Panorama Suite	\$15,535
Category P Panorama Suite	\$15,725

Double Occupancy

Category E/D Deluxe Stateroom	\$9385
Category B Panorama Suite	\$11,035
Category A Panorama Suite	\$11,235
Category P Panorama Suite	\$11,455

Prices are per person based on room occupancy; all taxes included.

Tour prices are subject to change without notice. Prices are per person based on room occupancy and are non-refundable. Seat upgrades on the airline may be available. This tour includes moderate physical activity. The itinerary blends some longer days and shorter days with more leisure time. Walking tours, as well as walking slightly longer distances, up-stairs or on uneven walking surfaces should be expected. Tour itinerary is subject to change. Past Globus Family of Brands travelers may qualify for an additional Welcome Back Credit, contact Newwest Travel for more information. [Read more about Newwest Travel's Terms & Conditions and Travel Disclaimers.](#)

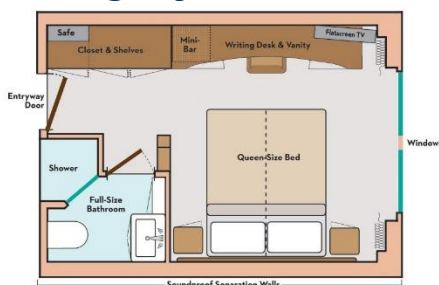
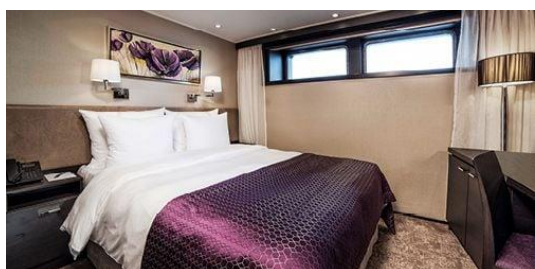
FOR MORE INFO AND RESERVATIONS PLEASE CONTACT NEWWEST
1 (800) 661-7281 | (780) 432-7446 | info@newwesttravel.com | newwesttravel.com



Avalon Ship Features:

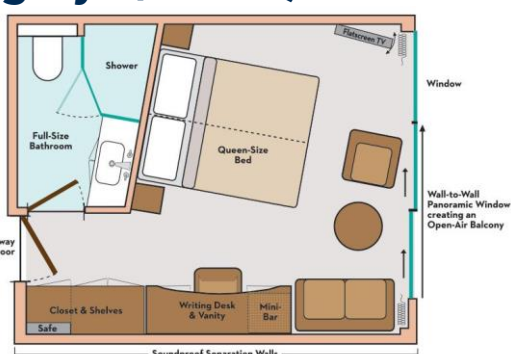
- Air-conditioned Panorama Lounge
- Complimentary specialty coffees including espresso and cappuccino available throughout the day
- Daily cocktail hour with cocktail of the day
- Complimentary water stations
- Open-air observation lounge with shade system & premium lounge chairs
- Bar serving premium spirits, wine & complimentary coffee, tea, soft drinks, and local beer/spirits throughout the day
- Complimentary Starlink Wi-Fi access (where signal is available)
- Spa treatment room
- Non-smoking staterooms & ship interior
- Fitness Room
- Library and games
- English-speaking friendly crew, staff & professional Cruise Director
- Seasonal recipes featuring the freshest local ingredients
- Sightseeing with Expert Local Guides
- Vegetarian options available with all meals
- Onboard lectures, activities & entertainment
- Complimentary coffee, tea, soft drinks, local beer/spirits with all onboard meals
- Daily early-riser coffee & tea
- Daily a la carte breakfast
- Complimentary juices with breakfast
- Four-course à la carte dinners with choice of salads, soups, entrées, dessert or cheese
- Daily a la carte lunch including regional specialties, healthy Avalon Fresh options and classic dishes
- Complimentary wine with all onboard lunches & dinners
- Chef-prepared onboard meals with regional cuisine and familiar favorites
- Headsets for all guided shore excursions
- Behind-the-scenes galley tour
- Choice of Classic, Active or Discovery excursions so that you can experience your cruise your way
- Flatscreen satellite TV with English-speaking channels & over 100 free movie options
- Onboard assistance is available to recommend, reserve and further personalize your cruise

Avalon Deluxe Stateroom (Category D or E)



- Complimentary Wi-Fi
- USB Ports
- Lighted makeup mirror
- One Queen-Sized Bed or Two Twins
- Two windows
- Egyptian super-combed cotton linens
- Comfort Collection Beds
- European-style duvets
- Soft & firm pillows
- Extra blankets
- Hairdryer
- Nightly turn-down service
- Spacious 3-door closets with shelves
- Flatscreen satellite TV with English-speaking channels & over 100 free movie options
- Direct-dial telephone
- Bathrobes & slippers
- Complimentary filtered water
- In-room safe
- Elegant, contemporary design
- Full shower with glass door
- Writing desk and chair
- Luxurious mattress toppers
- Choice of bed configuration
- Bedside tables with reading lamps
- L'Occitane bath products
- Easy under-bed luggage storage
- Alarm clock
- Individual climate control
- Large mirror in bathroom
- Well-stocked minibar

Avalon Panorama Suite (Category B, A or P)



- Complimentary Wi-Fi
- USB Ports
- Lighted makeup mirror
- One Queen-Sized Bed or Two Twins
- Make-up mirror
- 6-person sitting area
- Marble countertops in bathroom
- Wall-to-Wall Panoramic Window with Open-Air Balcony
- Sofa
- Coffee table
- Egyptian super-combed cotton linens
- Comfort Collection Beds
- European-style duvets
- Soft & firm pillows
- Extra blankets
- Hairdryer
- Nightly turn-down service
- Spacious 3-door closets with shelves
- Flatscreen satellite TV with English-speaking channels & over 100 free movie options
- Direct-dial telephone
- Bathrobes & slippers
- Complimentary filtered water
- In-room safe
- Elegant, contemporary design
- Full shower with glass door
- Writing desk and chair
- Luxurious mattress toppers
- Choice of bed configuration
- Bedside tables with reading lamps
- L'Occitane bath products
- Easy under-bed luggage storage
- Alarm clock
- Individual climate control
- Large mirror in bathroom
- Well-stocked mini bar

Avalon Envision Suite Ship

The Avalon suites features two full decks of Panorama Suites with wall-to-wall, floor-to-ceiling panoramic windows that transform the living space into river cruising's only Open-Air Balcony. Enjoy seamless views from your Comfort Collection bed that faces the window. With 200 square feet, Panorama Suites are more than 30% larger than the industry standard, affording you the space to entertain in your private sitting area or just relax and enjoy the passing vistas. Onboard amenities include a Fitness Center, complimentary computer use in public areas and complimentary Starlink Wi-Fi access, and a spacious Sky Deck with premium lounge chairs, shade system, whirlpool, and the delightful Sky Bistro. Sweeping views are yours to enjoy on the Avalon Envision!

